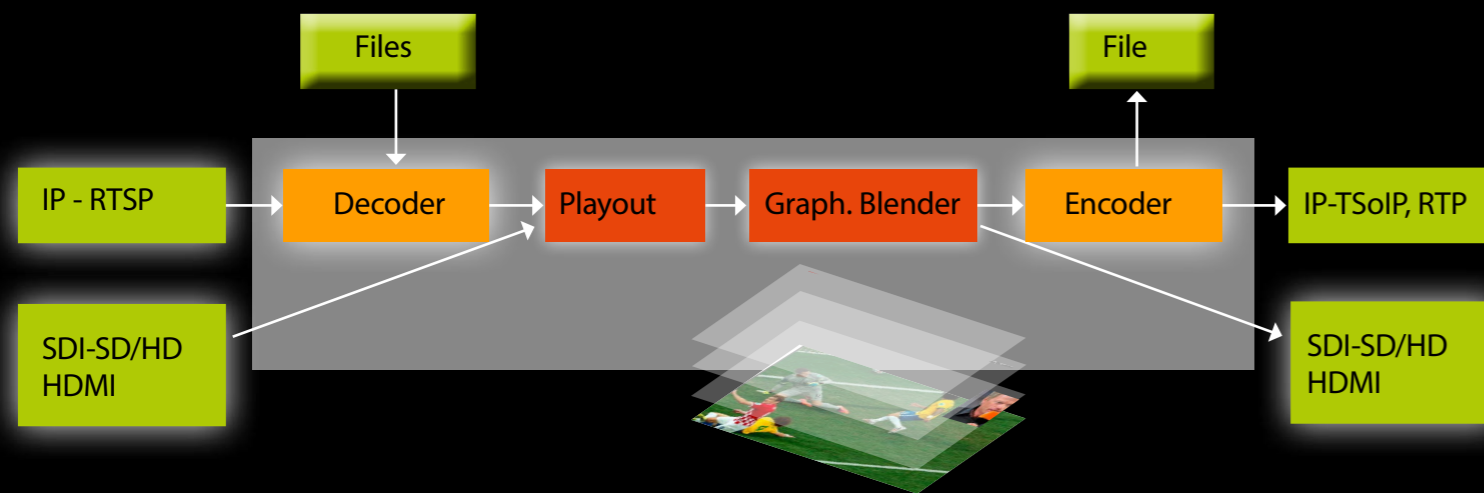


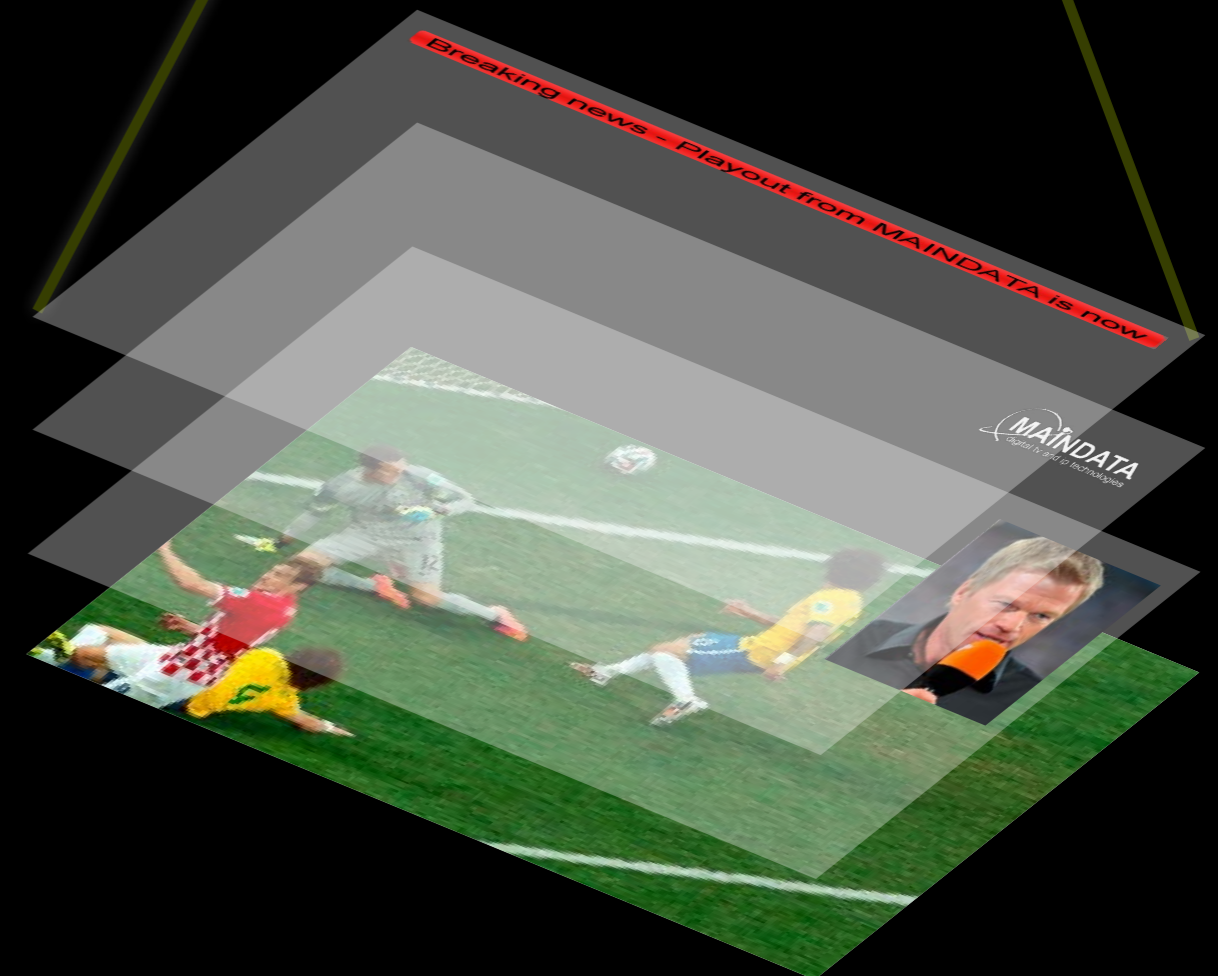
### TV Jet consist of:

- Playout
- Graphical Engine CG
- Encoder



### Use cases:

- Broadcast
- Streaming
- Remote Playout
- Digital Signage
- Show & Event



TV Jet consists of:

- **Playout**
- **Graphical Engine CG**
- **Encoder**

**Playout:**

Playout serves for precise video clips linearization and live inputs mixing.

**Key features:**

- Precise Audio Video synchronization - no audio shifting during timeslots switching.
- Wide container support: *mxfl, asf, avi, 3gp/mp4/mov, flv, mpeg-ps/ts, mkv/webm, ogg*
- Wide AV codec support: *h.263/mpeg2, h.264/mpeg4, aac etc*
- Multiple playouts can run in parallel at a single server depending at hw configuration.

**Inputs:**

- IP - rtsp
- SDI-SD/HD (Decklink)
- HDMI (Decklink)

**Outputs:**

- IP - rtp (encoder version)
- SDI-SD/HD (Decklink)
- HDMI (Decklink)
- File - recording output to file

**Timers:**

- Playlist time
- Timeslot time (elapsed or remaining)

**UI supports:**

- Preview (timeslots)
- Postview (output with graphical layers applied)

**Graphical Engine:**

Graphical engine mixes additional graphical layers on top of the main video layer.

**Graphical layer objects:**

- Moving text "Crawler" (multi-line, left/right & up/down direction, configurable speed)
- Static Text

- Clock and date
- Video (Picture in Picture) Chroma key transparency
- Image (incl. transparent background)
- Camera (rtsp, USB)
- Web page

**2 types of Layers:**

- Global Graphical Layers
- Timeslot Graphical Layer are applied during single timeslot duration

**Encoder:**

H.264 encoder (H.265 on request)  
SD/HD resolution up to 1920 x 1080 pxl < 60 Fps

**Ordering info:**

- MD3511** SW Playout with encoder
- MD3512** SW Playout raw video output
- MD3521** HW Playout with encoder
- MD3522** HW Playout raw video output

**MD3511 requirements:**

- CPU i5, i7 quad core
- Linux Ubuntu 15.10.
- GPU HW accelerated graphics requires:
  - Intel built-in graphics (i5, i7)
  - AMD HD Radeon series 7 (7850)
- SW mixer - no requirements

**MD3512 requirements:**

same as MD3511 + Decklink SDI/HDMI board

**MD3521 specifications:**

- 1,5 RU chassis with active front panel
- Supermicro board
- Linux Ubuntu 15.10.
- i7 quadcore with built in graphics

**MD3522 specs:**

same as MD3521 + Decklink Minimonitor



**Graphica Layers Objects:**

